

Anne Salmond: Tairāwhiti plants collected on *Endeavour* expedition, based on citations from the *Florilegium* (2017)

“A Royal Society Appointment with Venus in 1769: The Voyage of Cook and Banks in the 'Endeavour' in 1768-1771 and Its Botanical Results”; Author(s): William T. Stearn *Notes and Records of the Royal Society of London*, Vol. 24, No. 1 (Jun., 1969), pp. 64-90

Banks acquired a good working library of natural history books, 'all kinds of nets, trawls, drags and hooks for coral fishing . . . many cases of bottles with ground stoppers of several sizes, to preserve animals in spirits', stocks of paper for drying and storing plant specimens, and so on, and engaged two artists, A. Buchan and Sidney Parkinson (4, 17, 25, 33, 35), and a naturalist secretary, H. Sporing.

Solander, infected by Banks's enthusiasm, volunteered to come on the voyage himself (21). Banks was a gifted amateur, but he knew his technical deficiencies; Solander, well trained in Linnaean methods of description and classification, erudite, methodical and industrious, easy-going and likeable, would obviously be an ideal companion. Naturally Banks at once accepted his offer. Cook, who cannot have been pleased at the demands upon the limited space of his ship that these extra nine persons and their equipment and stores would make, nevertheless found Banks and Solander, mentioned in his journal as 'the gentlemen', both agreeable and instructive company; each man had a just respect for the abilities of the other.

Having furnished the Endeavour with wood and water at Success Bay, at the southern end of Le Maire Strait, on 21 January 1769 Cook weighed anchor and made for Cape Horn. It was to be many weeks before Banks and Solander had another opportunity to botanize ashore, but meanwhile they now had plenty to do. The wind, according to Banks, was foul, 'moderate breezes', then 'fresh gales with showers of rain', according to Cook; however, so Banks relates, 'our keeping boxes being full of new plants we little regarded any wind provided it was but moderate enough to let the draughts-men work, who to do them justice are now so used to the sea that it must blow a gale of wind before they leave off' (4). Their procedure here and later was to put the living specimens in chests and cover them with damp cloth to keep them fresh for study during the next few days.

New Zealand

In negotiations with the Maoris the priest Tupaia soon proved his value, for he found their language so like his own that he could fairly well understand them and they him. Nevertheless, matters did not go smoothly. They took leave of Poverty Bay (Teoneroa), 'with not above 40 species of Plants in our boxes'(4). During the next few months Cook circumnavigated first the North Island, then the South Island, with enough landings made, i.e. at Anaura Bay (Tegadu), Tolaga, Mercury Bay (Opuorage), Hauraki Bay and Bay of Islands (including Motuarohia) in the North Island, Queen Charlotte Sound (Totaranui) and Admiralty Bay in the South Island, for Banks and Solander to obtain about 400 species of plants.

These were more than Parkinson could portray adequately in the time available, especially as the death of Buchan at Tahiti had obliged him to draw much else. He accordingly adopted the expedient of making a rough sketch of the plant as a whole, thus recording the poise of leaves,

flowers and fruit, and also of drawing and colouring with care a few details sufficient to serve as the basis of a fully coloured drawing, especially as these sketches could be associated with herbarium specimens. As noted above, the boxes were chests in which newly gathered plants were put and covered with damp cloths to keep them fresh while Parkinson drew them and Solander studied and described them.

Landing in Poverty Bay: Sunday October 9 1769 – notes by Anne Salmond from the logs and journals

Sydney Parkinson [artist]: “The hills appear to be covered with small wood and bushes [along the coast], affording but an indifferent landscape... Within the bay there are many hills one behind another; though most part of the bay is surrounded by a valley [Waimata Valley?] in which is a number of trees; from whence, as well as other parts of the country, we saw some smoke arise... The water in the river [Turanganui] was found to be brackish, in which we were disappointed; but they shot some wild ducks of a very large size, and our botanical gentlemen gathered a variety of curious plants in flower.”

W.B. Monkhouse [surgeon]: “In the evening a party visited the northern shore where a river [Turanganui] had been observed from the Ship to empty itself into the Bay. No inhabitants now appeared – the Pinnace was left at the mouth of the river, and the Yawl which was also ashore was ordered up the river to ferry us over.

We examined the neighbourhood and presently found some huts with signs that the natives had just deserted them, these huts were very low, the walling of reeds, and thatched with a kind of rush and coarse grass... but there was one tolerable house about eight yards by six... the burnt stump of a tree on which was placed a piece of white pumice Stone formed into a very rude resemblance of a human figure [a fishing atua, almost certainly]; two pretty large fish potts very well made of withys [eel pots?].

On the other side the river [near the Waikanae stream?] we found four or five wigwams, a quantity of limpet shell, the Shell of a lobster, and a ground oven in the Tahitian style

Lt. John Gore: Landed on the east bank of the Turanganui River, then crossed the ‘salt rivulet’ [Turanganui – to the west bank of the river] – saw some Empty Hutts, Several sorts of wild fowl, And wild Sallery”

Richard Pickersgill: They landed near the river [Turanganui] which they found to be Salt and to fall in to ye Bay with a very rapid stream... ye Capt. And marines were gone into the woods.

[Having landed on the east bank of the Turanganui, Cook, the marines and the botanists Banks and Solander crossed to the west bank of the river, where they found a small fishing settlement abandoned. At some point they headed into ‘the woods’ – which seem to have been inland on the east bank from Kaiti Hill / Titirangi. Plants were collected both close to the beach and the Waikanae Stream, and from ‘the woods’.]

Monday 10 October 1769

[Landed again on the east side of the Turanganui River, accompanied by Tupaia; challenged by a party of warriors on the opposite bank of the river. Some of these warriors crossed the river, tried to snatch at the strangers' weapons, shootings followed, Te Rakau was shot; the Endeavour party returned to their boats, headed along the coast towards Young Nicks Head]

Lt John Gore: About 2 we had rounded The Bay and Got on the South side having seen nothing but a Bank of sand Quite round the Bay on which a Great Surf. This Bank seems To have been Thrown up by the Sea Thro' which there is a Break of The Sea into a Lake *[Awapuni lagoon?]* which Runs round behind the Bank beyond which There seems to be a fine Country being well wooded with fine Tall Trees *[kahikatea etc?]* and in all probability well inhabited. On the SW corner of the Bay *[Muriwai]* near a remarkable Knoll of Trees, saw a Village people and Canoes hear we Expected to have Found a Good Landing but were disappointed There being Too much Surf breaking far out.

Joseph Banks: "the countrey appeared to be much more fruitfull than where we now were. The bottom of the bay *[around Muriwai?]* provd to be a low sandy beach on which the sea broke most prodigiously so that we could not come near it; within was flat, a long way inland over this water might be seen from the mast head probably a lagoon but in the boat we could see no entrance into it *[Awapuni lagoon?]* We had almost arrivd at the farthest part of the bay *[Muriwai]* when a fresh breze came in from the seaward and we saw a Canoe sailing in standing right towards us.

[Intercepted the canoe, crew resisted, more shootings, four young men taken on board the Endeavour].

Tuesday 11 October

Landed on the east side of the river, although the boys begged to not to be left there, saying that the people on that side of the river were their enemies and would eat them. Cook crossed to the west bank of the Turanganui River, and the boys would not leave them.

Joseph Banks: 'We then went along a swamp *[Awapuni lagoon, or approach to it?]* intending to shoot some ducks of which there was great plenty; the countrey was quite flat; the Sergeant and 4 marines attended us walking upon a bank abreast of us which overlookd the country *[Looks as though there was a sand bank thrown up by the sea, with a swampy area inland of it – a common coastal formation]*. We proceeded about a mile when they Calld out that a large body of Indians was marching towards us, we drew together and resolvd to retreat; before we had put this in execution the 3 boys rose out of a bush in which they were hid and put themselves again under our protection.

We went upon the beach as the clearest place and walkd briskly towards the boats. The Indians were in two parties, one marchd along the bank before spoke of, the other came round by the morass where we could not see them... When we came to our boats the pinnace was a mile at least from her station (sent their by the officer ashore to pick up a

bird he had shot); the small boat only remained, which was carried over the river, and without the midshipman who was left to attend her: the consequence of this was that we were obliged to make three trips before we were all over to the rest of the party.”

W.B. Monkhouse: ‘A pretty large flat extends itself along part of the north side of this Bay and across its head the soil of which is mostly a Sand, but about the lagoon we visited the soil is a rich marle; this flat is covered with a coarse grass and low shrubbery, along the South side there appeared to be several fine groves of well grown trees – the back land consists of a group of hills of good height and are pretty well clothed with wood.

[When Cook and the officers went to shoot ducks (on a swamp close to the Awapuni lagoon?) they saw several parties of warriors approaching, returned to the east bank of the river with the boys, where a party of sailors were cutting wood. This suggests that the woods were inland from Kaiti Hill. No doubt plants were collected in these woods.]

Wednesday October 12

Joseph Banks: This morn We took our leave of Poverty bay with not above 40 species of Plants in our boxes, which is not to be wondered at as we were so little ashore and always upon the same spot; the only time we wandered about a mile from the boats was upon a swamp, where not more than 3 species of Plants were found.

[Of the plant species collected in Teoneroa, only 3 were collected by the ‘swamp’ – ie. inside the sand ridge that ran along the beach, thrown up by the surf, towards the Awapuni lagoon.

The rest were collected near the beach, on the east and west banks of the Turanganui River; or in the ‘woods’ that seem to have been inland from Kaiti Hill / Titirangi.

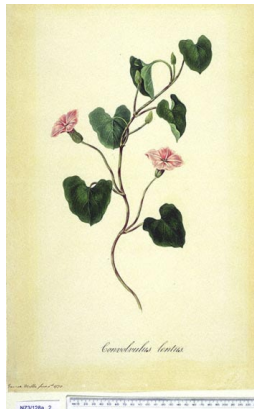
Once the specimens were sketched by Parkinson and given a botanical description by Solander, they were pressed between sheets taken from a waste copy of a commentary on Paradise Lost by Milton].

Teoneroa / Poverty Bay – species illustrated in *Florilegium*



1. Species: Rangiora, (*Brachyglottis Repanda*) Family: Compositae Place: Teoneroa, Tegadu Bay, Tolaga Bay

Artist: Frederick Polydore Nodder Format: Finished Drawing

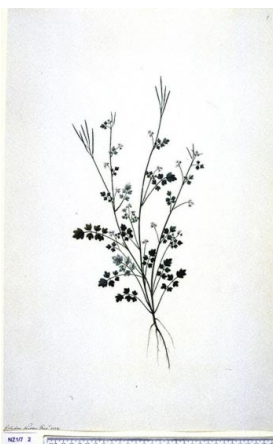


2. Species: Pöhuehue, *Calystegia Sepium* Family: Convolvulaceae Country: New Zealand Place: Teoneroa, Tegadu Bay, Tolaga Bay. Artist: James Miller Format: Finished Drawing



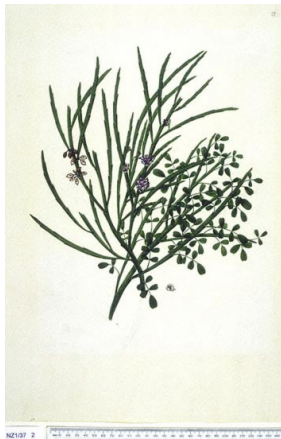
3. Species: Pōwhiwhi, *Calystegia Tuguriorum* Family: Convolvulaceae Country: New Zealand Place: Teoneroa, Tegadu Bay, Tolaga Bay

Artist: Format: Finished Drawing



4. Species: Panapana, *Cardamine Debilis* Family: Cruciferae Country: New Zealand Place: Teoneroa, Tegadu Bay, Tolaga Bay

Artist: Frederick Polydore Nodder **Format:** Finished Drawing



5. Species: **Makaka**, *Carmichaelia Solandri* **Family:** Leguminosae **Country:** New Zealand **Place:** Teoneroa, Tegadu Bay, Tolaga Bay **Artist:** **Format:** Finished Drawing



6. Species: **Tauhinu**, *Cassinia Leptophylla* **Family:** Compositae **Country:** New Zealand **Place:** Teoneroa, Tolaga Bay, Opoorage **Artist:** Frederick Polydore Nodder **Format:** Finished Drawing



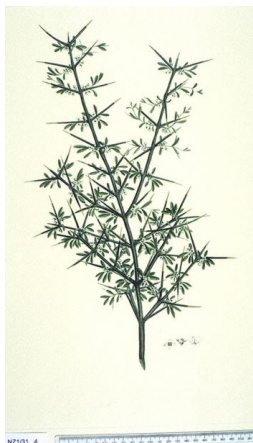
7. Species: **Karaka**, *Corynocarpus Laevigatus* **Family:** Corynocarpaceae **Country:** New Zealand **Place:** Teoneroa, Tegadu and Tolaga Bay, Opoorage **Artist:** Gabriel Smith **Format:** Coloured Engraving



8. Species: **Pōānanga**, *Clematis Forsteri* **Family:** Ranunculaceae **Country:** New Zealand **Place:** Teoneroa, Tegadu Bay, Tolaga Bay **Artist:** Frederick Polydore Nodder **Format:** Finished Drawing



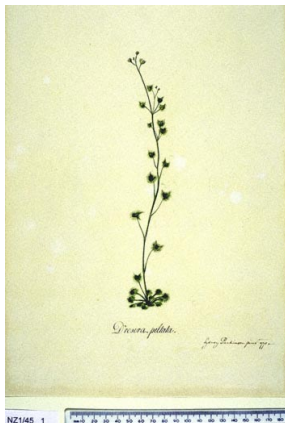
9. Species: **Tātarahake**, *Coprosma Acerosa* **Family:** Rubiaceae **Country:** New Zealand **Place:** Teoneroa, Tolaga Bay, Opoorage **Artist:** Frederick Polydore Nodder **Format:** Finished Drawing



10. Species: **Tūmatakuru**, *Discaria Toumatou* **Family:** Rhamnaceae **Country:** New Zealand
Place: Teoneroa, Totara Nui, Motuhora Island
Artist: William Tringham **Format:** Coloured Engraving



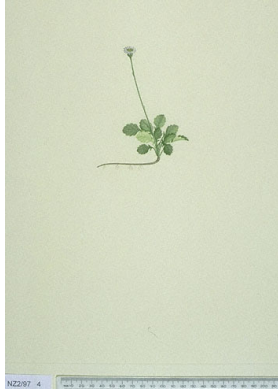
11. Species: **Karamū**, *Coprosma Lucida* **Family:** Rubiaceae **Country:** New Zealand **Place:** Teoneroa, Tegadu, Tolaga Bay, Opoorage
Artist: **Format:** Finished Drawing



12. Species: **Wahu**, *Drosera Peltata* **Family:** Droseraceae **Country:** New Zealand **Place:** Teoneroa, Tegadu Bay, Tolaga Bay **Artist:** Sydney Parkinson **Format:** Finished Drawing



13. Species: **Matua-kūmara**, *Geranium Solanderi* **Family:** Geraniaceae **Country:** New Zealand **Place:** Teoneroa, Tegadu Bay, Tolaga Bay
Artist: Frederick Polydore Nodder **Format:** Finished Drawing



14. Species: **Papa-tāniwhaniwha**, *Lagenifera Pumila* **Family:** Compositae **Country:** New Zealand **Place:** Teoneroa, Tegadu And Tolaga Bay, Opoorage
Artist: Gerald Sibelius **Format:** Coloured Engraving



15. Species: **Nau**, *Lepidium Oleraceum* **Family:** Cruciferae **Country:** New Zealand **Place:** Teoneroa Tegadu and Tolaga Bay Opoorage
Artist: Daniel Mackenzie **Format:** Coloured Engraving



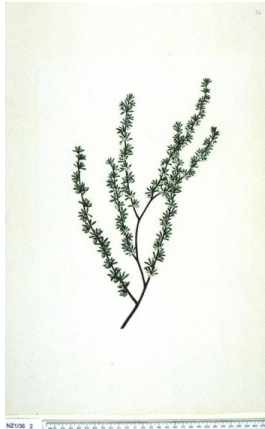
16. Species: Pöhuehue, *Muehlenbeckia Complexa* **Family:** Polygonaceae **Country:** New Zealand **Place:** Teoneroa, Tolaga Bay, Opoorage **Artist:** Edward Walker **Format:** Coloured Engraving



17. Species: Ngaio, *Myoporum Laetum* **Family:** Myoporaceae **Country:** New Zealand **Place:** Teoneroa, Tegadu Bay, Tolaga Bay **Artist:** Frederick Polydore Nodder **Format:** Finished Drawing



18. Species: Kōpata, *Pelargonium Inodorum* **Family:** Geraniaceae **Country:** New Zealand **Place:** Teoneroa, Tegadu, Tolaga Bay, Opoorage **Artist:** Frederick Polydore Nodder **Format:** Finished Drawing



19. Species: **Mākaka**, *Plagianthus Divaricatus* **Family:** Malvaceae **Country:** New Zealand
Place: Teoneroa, Tolaga Bay, Opoorage
Artist: **Format:** Finished Drawing



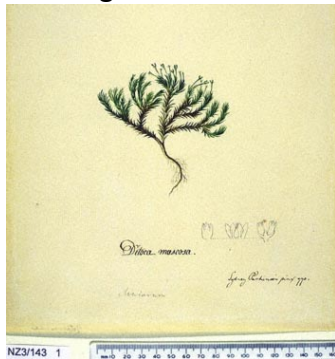
20. Species: **Hanea**, *Rorippa Palustris* **Family:** Cruciferae **Country:** New Zealand **Place:** Teoneroa, Tegadu Bay, Tolaga Bay **Artist:** **Format:** Finished Drawing



21. Species: **Ureure**, *Sarcocornia Quinqueflora* **Family:** Chenopodiaceae **Country:** New Zealand **Place:** Teoneroa **Artist:** Sydney Parkinson **Format:** Finished Drawing



22. Species: **Kūmarahou**, *Scandia Rosaefolia* **Family:** Umbelliferae **Country:** New Zealand
Place: Teoneroa, Tegadu Bay, Tolaga Bay **Artist:** John Frederick Miller **Format:** Finished Drawing



23. Species: **Kohukohu**, *Scleranthus Biflorus* **Family:** Caryophyllaceae **Country:** New Zealand
Place: Teoneroa, Tegadu Bay, Tolaga Bay **Artist:** Sydney Parkinson **Format:** Finished Drawing



24. Species: **Kohukohu**, *Scleranthus Biflorus* **Family:** Caryophyllaceae **Country:** New Zealand
Place: Teoneroa, Tegadu Bay, Tolaga Bay **Artist:** Gabriel Smith **Format:** Coloured Engraving



25. Species: **Pukatea**, *Senecio Glomeratus* **Family:** Compositae **Country:** New Zealand
Place: Teoneroa, Tegadu Bay, Tolaga Bay
Artist: Frederick Polydore Nodder **Format:** Finished Drawing



26. Species: **Pekapeka**, *Senecio Quadridentatus* **Family:** Compositae **Country:** New Zealand
Place: Teoneroa, Tegadu Bay, Tolaga Bay **Artist:** Daniel Mackenzie **Format:** Coloured Engraving



27. Species: **Poroporo**, *Solanum Aviculare* **Family:** Solanaceae **Country:** New Zealand **Place:** Teoneroa, Tegadu Bay, Tolaga Bay **Artist:** John Frederick Miller **Format:** Finished Drawing



28. Species: **Raupeti**, *Solanum Nodiflorum* **Family:** Solanaceae **Country:** New Zealand
Place: Teoneroa, Tegadu Bay, Opoorage
Artist: John Frederick Miller **Format:** Finished Drawing



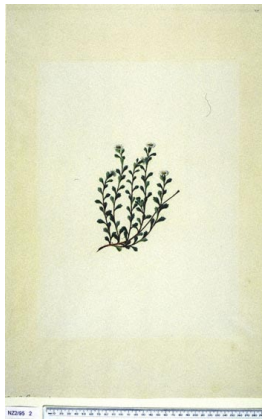
29. Species: **Kowhai**, *Sophora Microphylla* **Family:** Leguminosae **Country:** New Zealand
Place: Teoneroa, Tegadu Bay, Tolaga Bay **Artist:** Frederick Polydore Nodder **Format:** Finished Drawing



30. Species: **Kowhai**, *Sophora Tetraptera* **Family:** Leguminosae **Country:** New Zealand
Place: Teoneroa, Tegadu Bay, Tolaga Bay **Artist:** Frederick Polydore Nodder **Format:** Finished Drawing



31. Species: **Kōkihi**, *Tetragonia Tetragonioides* **Family:** Tetragoniaceae **Country:** New Zealand **Place:** Teoneroa, Tegadu Bay, Tolaga Bay **Artist:** Sydney Parkinson **Format:** Finished Drawing



32. Species: *Vittadinia Australis* **Family:** Compositae **Country:** New Zealand **Place:** Teoneroa, Tolaga Bay, Opoorage **Artist:** Frederick Polydore Nodder **Format:** Finished Drawing

Tegadoo / Anaura Bay

October 20 1769

W.B. Monkhouse: By nine in the morning two Canoes came off to us, and in a short time we increased our number to thirteen. We stood in for an inlet or bay in which was an Island dividing it into two harbours as it were. This Island was of a high wedge like figure, its south face Sloping and very well covered with shrubbery, its north face mere naked rock and almost perpendicular. About midway on its ridge were two Stages elevated on polls about twenty feet high.. From the stage descended a tolerably large village on the South side. The houses were old, and now uninhabited. We anchored on the north side of this Isle.

In the evening the gentlemen were able to effect a landing, and walked along the beach finding the Natives civil... They met with a good run of water – saw two or three quails – found plenty of a kind of wild parsley - but the Cultivations were truly astonishing.

Joseph Banks: Several canoes followd us and seemd very peaceably inclind, inviting us to go into a bay they pointed to where they said was plenty of fresh water, we followd them in and by 11 came to an anchor... In the course of the evening it became fair and we went ashore. We were receivd with great friendship by the natives in general... We made them small presents, walkd round the bay, and found a place for watering where the people are to land tomorrow and fill at least some of our empty cask.

James Cook: In the evening it fell Moderate and we landed and found 2 small streams of fresh water and the natives to all appearences very friendly and peaceable, on which account I resolved to stay one day at least to fill a little water and to give Mr Banks an opportunity to Collect a little of the produce of the Country.

October 21 1769

W.B. Monkhouse: We had an opportunity to examine their Cultivations more at leasure to day and found them to surpass any idea we had formed of them. The ground is compleatly cleard of all weeds – the mold broke with as much care as that of our best gardens. The Sweet potatoes are set in distinct little molehills which are ranged in some in straight lines, in others in quincunx. In one Plott I observed these hillocks, at their base, surrounded with dried grass. The Arum is planted in little circular concaves, exactly in the manner our Gard'ners plant Melons as Mr – informs me. The Yams are planted in like manner with the sweet potatoes; these Cultivated spots are enclosed with a perfectly close pailing of reeds about twenty inches high. The Natives are now at work completing these fences. We saw a snare or two set upon the ground for some small animal, probably of the Mus tribe. The radical leaves or seed leaves of some of these plants are just above ground. We therefore suppose their seed time to be about the beginning of this month. It is agreed that there are a hundred acres of ground cultivated in this Bay – the soil is light and sandy in some parts – on the sides of the hills it is a good black mold. We saw some of their houses ornamented with gourd plants in flower. These, with the Yams, sweet Potatoes and Arum are, as far as we yet know, the whole of what they cultivate. Whether the Cloth Plant, which we now became familiar with, is at all cultivated, is not without doubt.

We found about Sixty people sitting very orderly and peaceably near the Watering Place...
Up the hills on the South side of the Bay we met with a single house pleasantly situated ...

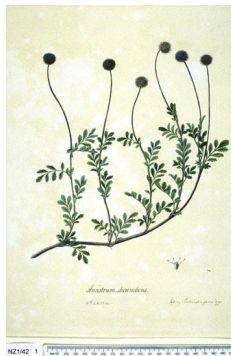
Joseph Banks: This morn at daybreak the waterers went ashore and soon after Dr. Solander and myself; there was a good deal of Surf upon the beach but we landed without much difficulty... We rangd all about the bay and were well repaid by finding many plants and shooting some most beautiful birds... In the evening all the boats being employd in carrying on board we were likely to be left ashore till after dark; the loss of so much time in sorting and putting in order our specimens was what we did not like so we applied to our friends the Indians for a passage in one of their Canoes...

October 22 1769

Joseph Banks: The surf being so great on the shore that water was got with great difficulty made the Captn resolve to leave the bay this morn

James Cook: This Bay is called by the Natives Tegadoo, but as it hath nothing to recommend it I shall give no description of it.

Tegadoo / Anaura Bay



1. Species: Piripiri, *Acaena Anserinifolia* Family: Rosaceae Country: New Zealand Place: Tegadu Bay, Tolaga Bay, Opoorage Artist: Sydney Parkinson Format: Finished Drawing



2. Species: Panahi, *Calystegia Soldanella* Family: Convolvulaceae Country: New Zealand Place: Tegadu Bay, Tolaga Bay, Opoorage Artist: James Miller Format: Finished Drawing



3. Species: **Kōwhai Ngutu-kākā**, *Clanthus Puniceus* **Family:** Leguminosae **Country:** New Zealand **Place:** Tegadu Bay, Tolaga Bay, Motu Aro **Artist:** **Format:** Finished Drawing



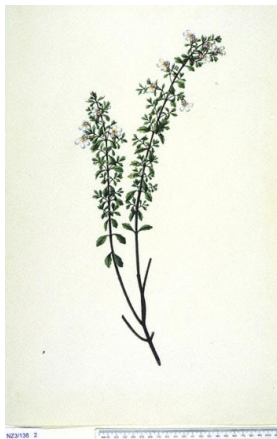
4. Species: **Pinaki**, *Daucus Glochidiatus* **Family:** Umbelliferae **Country:** New Zealand **Place:** Tegadu Bay, Tolaga Bay, Opoorage **Artist:** John Frederick Miller **Format:** Finished Drawing



5. Species: **Whau**, *Entelea Arborescens* **Family:** Tiliaceae **Country:** New Zealand **Place:** Tegadu Bay, Tolaga Bay, Motu Aro **Artist:** Gerald Sibelius **Format:** Coloured Engraving



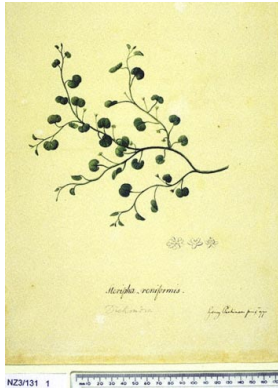
6. Species: *Epilobium Nummularifolium* **Family:** Onagraceae **Country:** New Zealand **Place:** Tegadu Bay, Tolaga Bay, Motu Aro **Artist:** Jabez Goldar **Format:** Coloured Engraving



7. Species: **Tūtūmako**, *Euphrasia Cuneata* **Family:** Scrophulariaceae **Country:** New Zealand **Place:** Tegadu Bay, Tolaga Bay, Totara Nui **Artist:** **Format:** Finished Drawing



8. Species: **kotukutuku**, *Fuchsia Excorticata* **Family:** Onagraceae **Country:** New Zealand **Place:** Tegadu Bay, Tolaga Bay, Motu Aro **Artist:** Gabriel Smith **Format:** Coloured Engraving



9. Species: *Dichondra Repens* **Family:** Convolvulaceae **Country:** New Zealand **Place:** Tegadu Bay **Artist:** Sydney Parkinson **Format:** Finished Drawing



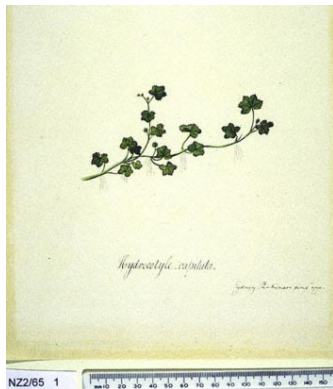
10. Species: **Hangehange**, *Geniostoma Rupestre* **Family:** Loganiaceae **Country:** New Zealand **Place:** Tegadu Bay, Tolaga Bay, Opoorage **Artist:** James Miller **Format:** Finished Drawing



11. Species: **Porokaiwhiri**, *Hedycarya Arborea* **Family:** Monimiaceae **Country:** New Zealand **Place:** Tegadu Bay, Tolaga Bay, Opoorage **Artist:** Daniel Mackenzie **Format:** Coloured Engraving



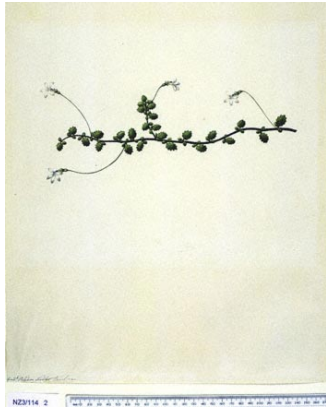
12. Species: *Hydrocotyle Americana* **Family:** Hydrocotylaceae **Country:** New Zealand **Place:** Tegadu Bay, Tolaga Bay **Artist:** Sydney Parkinson **Format:** Finished Drawing



13. Species: *Hydrocotyle Moschata* **Family:** Hydrocotylaceae **Country:** New Zealand **Place:** Tegadu Bay, Tolaga Bay, Opoorage **Artist:** Sydney Parkinson **Format:** Finished Drawing



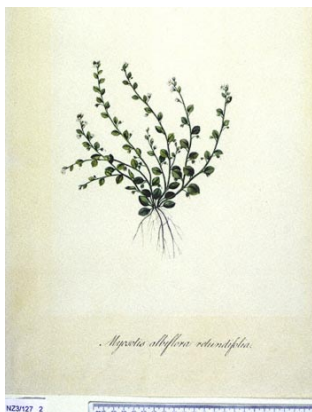
14. Species: *Hydrocotyle Novae-zelandiae* **Family:** Hydrocotylaceae **Country:** New Zealand **Place:** Tegadu Bay, Tolaga Bay, Opoorage **Artist:** Sydney Parkinson **Format:** Finished Drawing



15. Species: Panakenake, *Lobelia Angulata* Family: Campanulaceae Country: New Zealand Place: Tegadu Bay, Tolaga Bay, Opoorage Artist: Frederick Polydore Nodder Format: Finished Drawing



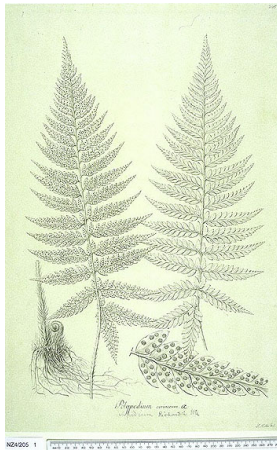
16. Species: Pöhuehue, *Muehlenbeckia Australis* Family: Polygonaceae Country: New Zealand Place: Tolaga Bay, Tegadu Bay, Totara Nui Artist: John Frederick Miller Format: Finished Drawing



***17. Species: *Myosotis Spathulata* Family: Boraginaceae Country: New Zealand Place: Tegadu Bay, Tolaga Bay, Opoorage Artist: Format: Finished Drawing**



18. Species: Mokimoki, *Phymatosorus Scandens* Family: Polypodiaceae Country: New Zealand Place: Tolaga Bay, Tegadu Bay, Totara Nui Artist: Format: Finished Drawing



19. Species: Pikopiko, *Polystichum Richardii* Family: Dryopteridaceae Country: New Zealand Place: Tegadu Bay, Tolaga Bay, Opoorage Artist: John Frederick Miller Format: Finished Drawing



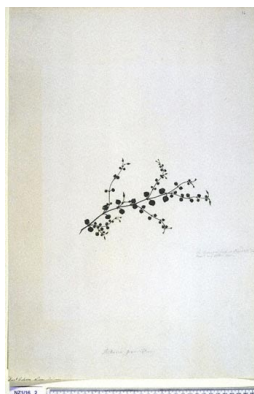
20. Species: Kōpukapuka, *Ranunculus Hirtus* Family: Ranunculaceae Country: New Zealand Place: Tegadu Bay, Tolaga Bay, Opoorage Artist: Frederick Polydore Nodder Format: Finished Drawing



21. Species: **Rungarunga**, *Rumex Flexuosus* **Family:** Polygonaceae **Country:** New Zealand **Place:** Tegadu Bay, Tolaga Bay, Totara Nui **Artist:** **Format:** Finished Drawing



22. Species: **Pūhāureora**, *Senecio Rufiglandulosus* **Family:** Compositae **Country:** New Zealand **Place:** Tegadu Bay, Tolaga Bay, Opoorage **Artist:** Frederick Polydore Nodder **Format:** Finished Drawing



23. Species: *Stellaria Parviflora* **Family:** Caryophyllaceae **Country:** New Zealand **Place:** Tegadu Bay, Totara Nui **Artist:** Frederick Polydore Nodder **Format:** Finished Drawing

Tolaga / Uawa

October 23 1769

James Cook: At 8am being right before the Bay of Tegadoo and about a League from it, some of the Natives came off to us and inform'd us that in a Bay a little to the southward was fresh water and easy getting at it. This afternoon as soon as the Ship was moor'd I went ashore to examine the Watering place, accompanied by Mr Banks and Dr Solander. I found the water good and the place pretty convenient, and plenty of wood close to the high water mark.

Sydney Parkinson: The country about the bay is agreeable beyond description, and, with proper cultivation, might be rendered a kind of second Paradise. The hills are covered with beautiful flowering shrubs, intermingled with a great number of tall and stately palms, which fill the air with a most grateful fragrant perfume. We saw the tree that produces the cabbage which ate well boiled. We also found some trees that yielded a fine transparent gum; and, between the hills, we discovered some fruitful valleys that are adapted either to cultivation or pasturage. The country abounds with different kinds of herbage fit for food; and among such a variety of trees as are upon this land, there are, doubtless, many that produce eatable fruit. Our botanists were agreeably employed in investigating them, as well as many other lesser plants with which the country abounds, Within land there were many scandent ferns and parasitic plants; and, on the sea shore, Salicornias, Misembrian, Mums, and a variety of Fucus's.

James Magra: At the watering place ... there were several houses contiguous, and the lands in the adjacent vallies being regular flats were neatly disposed in small plantations; the ground appearing to be well broken as if designed for gardens.... In many places we observed the cloth plant growing without cultivation... In conducting him to the watering place, as often as they came to a ditch or rivulet, of which there are many for draining their fields, the Indian always carried him over dry.

October 24 1769

James Cook: Found wild sellery which I caused to be boild for the Ships Compney every Morning

Joseph Banks: This morn Dr Solander and myself went ashore botanizing and found many new plants... In our walks we met with many houses in the vallies that seemd to be quite deserted, the people livd on the ridges if hills in very slight built houses or rather sheds... In the evening we returnd to the watering place in order to go on board with our treasure of plants birds &c..

October 25 1769

James Cook (rough notes): This afternoon I went upon the hills in order to view the Country, after I had done this I could see but little the sight being bound'd every where by still higher hills. I found the tops of the hill Barren at least nothing grow'd upon them but

fern but the Vallys and Sides of many of the Hills were luxirous clothed with several sorts of trees and little plantations of the Natives lying dispersd upon and down the Country.

Joseph Banks: Went ashore this morn and renewd our searches for plants &c with great success.

October 26 1769

Joseph Banks: All this day it rained without intermission so hard that notwithstanding our wishing neither Dr Solander nor myself could go ashore.

October 27 1769

James Cook: I went and soundd the Bay. I made a shift to land in two places, the first time in the bottom of the Bay where I went a little way into the Country but met with nothing extraordinary, the other place I landed was at the north point of the Bay where I got as much Sellery and Scurvy grass as loaded the Boat.

Joseph Banks: Dr Solander went with the Captn to examine the bottom of the bay, myself went ashore at the watering place to collect Plants... Myself found some plants and went to the top of the hill above the watering place to see a fence of poles which we had Observed from the ship.

October 28 1769

Joseph Banks: This morn we went ashore in an Island on the left hand as you come into the bay called by the natives Tubolai.

October 29 1769

James Cook: Unmoord and at 6 Weigh'd and put to sea.... We found in the woods Trees of above 20 different sorts, specimens of each I took on board as all of them were unknown to any of us: the tree which we cut for fireing was something like Maple and yielded a whitish gum. There was another sort of a deep yallow which we imagined might prove useful in dying. We likewise found one Cabbage tree which we cut down for the sake of the Cabbage. The Country abounds with a great number of Plants and the Woods with as great a variety of very beautiful birds, many of them unknown to us. The soil both of the hills and Vallies is light and sandy and very proper for producing all kinds of Roots but we saw only sweet Potatous and Yams among the; these they plant in little round hills, and have plantations of them containing several Acres neatly laid out and kept in good order, and many of them are fenc'd in with low pailing which can only serve for ornament.

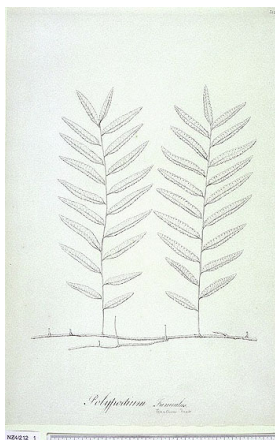
Tolaga / Uawa



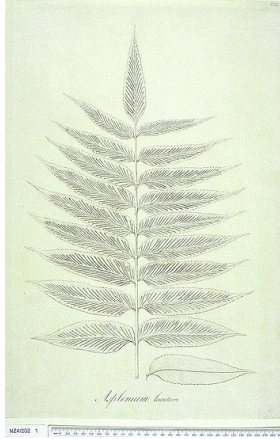
1. Species: **Makomako**, *Aristotelia Serrata* **Family:** Elaeocarpaceae **Country:** New Zealand **Place:** Tolaga Bay, Opoorage, Totara Nui **Artist:** Frederick Polydore Nodder **Format:** Finished Drawing



2. Species: *Senecio lautus* **Family:** Compositae **Country:** New Zealand **Place:** Tolaga Bay, Opoorage, Totara Nui **Artist:** Frederick Polydore Nodder **Format:** Finished Drawing



3. Species: *Arthropteris Tenella* **Family:** Nephrolepidaceae **Country:** New Zealand **Place:** Opoorage, Tolaga Bay, Totara Nui **Artist:** John Frederick Miller **Format:** Finished Drawing



4. Species: **Huruhuru whenua**, *Asplenium Oblongifolium* **Family:** Aspleniaceae **Country:** New Zealand **Place:** Tolaga Bay, Opoorage, Totara Nui **Artist:** John Frederick Miller **Format:** Finished Drawing



5. Species: **Taupata**, *Asplenium Oblongifolium* **Family:** Rubiaceae **Country:** New Zealand **Place:** Tolaga Bay, Opoorage, Oouhooragi **Artist:** Daniel Mackenzie **Format:** Coloured Engraving



6. Species: **Karamū**, *Coprosma Robusta* **Family:** Rubiaceae **Country:** New Zealand **Place:** Tolaga Bay, Opoorage, Totara Nui **Artist:** Frederick Polydore Nodder **Format:** Finished Drawing



7. Species: Pīngao, *Desmoschoenus Spiralis* Family: Cyperaceae Country: New Zealand Place: Tolaga Bay, Taboulo Island Artist: James Miller Format: Finished Drawing



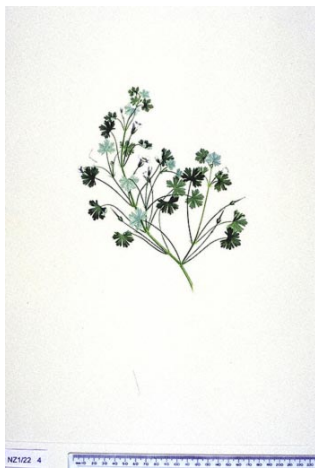
8. Species: Akeake, *Dodonaea Angustifolia* Family: Sapindaceae Country: New Zealand Place: Tolaga Bay, Opoorage, Oohoorage Artist: Thomas Burgis Format: Finished Drawing



9. Species: Kohekohe, *Dysoxylum Spectabile* Family: Meliaceae Country: New Zealand Place: Tolaga Bay, Opoorage, Motu Aro Island Artist: Frederick Polydore Nodder Format: Finished Drawing



10. Species: *Galium Propinquum* **Family:** Rubiaceae **Country:** New Zealand **Place:** Tolaga Bay **Artist:** Sydney Parkinson **Format:** Finished Drawing



11. Species: *Geranium Potentilloides* **Family:** Geraniaceae **Country:** New Zealand **Place:** Tolaga Bay, Opoorage, Motu Aro Island **Artist:** Daniel Mackenzie **Format:** Coloured Engraving



12. Species: *Gratiola Sexdentata* **Family:** Scrophulariaceae **Country:** New Zealand **Place:** Tolaga Bay **Artist:** Sydney Parkinson **Format:** Finished Drawing



13. Species: Puka, *Griselinia lucida* Family: Cornaceae Country: New Zealand Place: Tolaga Bay, Opoorage, Totara Nui Artist: Frederick Polydore Nodder Format: Finished Drawing



14. Species: Kōkōmuka, *Hebe macrocarpa* Family: Scrophulariaceae Country: New Zealand Place: Opoorage, Tolaga Bay, Totara Nui Artist: Sydney Parkinson Format: Finished Drawing



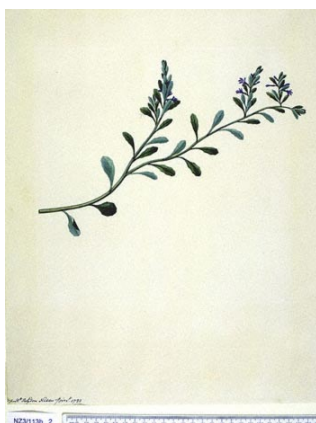
15. Species: Koromiko, *Hebe salicifolia* Family: Scrophulariaceae Country: New Zealand Place: Tolaga Bay, Opoorage Artist: Sydney Parkinson Format: Finished Drawing



16. Species: Rewarewa, *Knightia Excelsa* Family: Proteaceae Country: New Zealand Place: Tolaga Bay, Opoorage Artist: Sydney Parkinson Format: Finished Drawing



17. Species: Family: Mikoikoi, Libertia Iridaceae Country: New Zealand Place: Tolaga Bay, Opoorage, Totara Nui Artist: Daniel Mackenzie Format: Coloured Engraving



18. Species: Punakuru, *Lobelia Alata* Family: Campanulaceae Country: New Zealand Place: Tolaga Bay, Opoorage, Motu Aro Island Artist: Frederick Polydore Nodder Format: Finished Drawing



19. Species: **Whārangi**, *Melicope Ternata* **Family:** Rutaceae **Country:** New Zealand **Place:** Tolaga Bay, Opoorage, Totara Nui **Artist:** James Miller **Format:** Finished Drawing



20. Species: **Akatea**, *Melicope Ternata* **Family:** Myrtaceae **Country:** New Zealand **Place:** Tolaga Bay, Opoorage, Ohoorage **Artist:** Frederick Polydore Nodder **Format:** Finished Drawing



21. Species: **Māpou**, *Myrsine Australis* **Family:** Myrsinaceae **Country:** New Zealand **Place:** Tolaga Bay, Opoorage, Totara Nui **Artist:** Frederick Polydore Nodder **Format:** Finished Drawing



22. Species: *Parietaria Debilis* **Family:** Urticaceae **Country:** New Zealand **Place:** Tolaga Bay, Opooarge **Artist:** Frederick Polydore Nodder **Format:** Finished Drawing



23. Species: **Autetaranga**, *Pimelea Arenaria* **Family:** Thymelaeaceae **Country:** New Zealand **Place:** Tolaga Bay, Opooarge **Artist:** **Format:** Finished Drawing



24. Species: **Tawhitikaro**, *Pittosporum Ralphii* **Family:** Pittosporaceae **Country:** New Zealand **Place:** Tolaga Bay, Opooarge, Totara Nui **Artist:** James Miller **Format:** Finished Drawing



25. Species: **Köhühū**, *Pittosporum Tenuifolium* **Family:** Pittosporaceae **Country:** New Zealand **Place:** Tolaga Bay, Opoorage, Opoorage **Artist:** **Format:** Finished Drawing



26. Species: *Plantago Raoulii* **Family:** Plantaginaceae **Country:** New Zealand **Place:** Tolaga Bay, Motu Aro Island **Artist:** Sydney Parkinson **Format:** Finished Drawing



27. Species: **Pākau**, *Pneumatopteris Pennigera* **Family:** Thelypteridaceae **Country:** New Zealand **Place:** Tolaga Bay, Opoorage, Totara Nui **Artist:** John Frederick Miller **Format:** Finished Drawing



28. Species: Puahou, *Pseudopanax Arboreus* Family: Araliaceae Country: New Zealand Place: Tolaga Bay, Opoorage, Motu Aro Island Artist: Frederick Polydore Nodder Format: Coloured Engraving



29. Species: Houpara, *Pseudopanax Lessonii* Family: Araliaceae Country: New Zealand Place: Tolaga Bay, Opoorage, Totara Nui Artist: Van Drazowa Format: Coloured Engraving



30. Species: *Rorippa Gigantea* Family: Cruciferae Country: New Zealand Place: Tolaga Bay, Opoorage, Totara Nui Artist: Frederick Polydore Nodder Format: Finished Drawing



31. Species: **Patē**, *Schefflera Digitata* **Family:** Araliaceae **Country:** New Zealand **Place:** Tolaga Bay, Opoorage, Totara Nui **Artist:** John Frederick Miller **Format:** Finished Drawing



32. Species: *Senecio Minimus* **Family:** Compositae **Country:** New Zealand **Place:** Tolaga Bay, Opoorage, Totara Nui **Artist:** Frederick Polydore Nodder **Format:** Finished Drawing



33. Species: *Senecio Scaberulus* **Family:** Compositae **Country:** New Zealand **Place:** Tolaga Bay, Opoorage, Totara Nui **Artist:** Frederick Polydore Nodder **Format:** Finished Drawing



34. Species: Tūrepō, *Streblus heterophyllus* Family: Moraceae Country: New Zealand Place: Tolaga Bay Artist: Frederick Polydore Nodder Format: Finished Drawing



35. Species: Mākaika, *Thelymitra longifolia* Family: Orchidaceae Country: New Zealand Place: Tolaga Bay, Opoorage Artist: Frederick Polydore Nodder Format: Finished Drawing



36. Species: Pūriri, *Vitex lucens* Family: Verbenaceae Country: New Zealand Place: Tolaga Bay, Motu Aro Island Artist: Frederick Polydore Nodder Format: Finished Drawing